

Rollmaxx

SureWeld

After all, Quality does Carry Weight!

Aluminium Plant Trailers



SW2000

SW2000C

SW2400EC

SW2000

SW2000W

SW2400E

SW2400EW

SW3500E

SW4100E

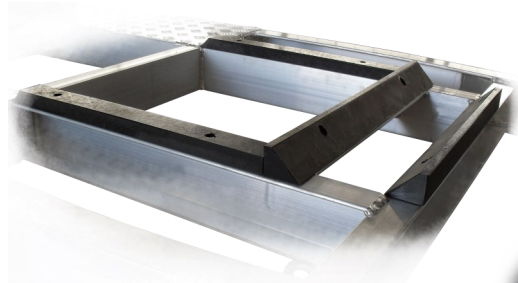


1800 787 005

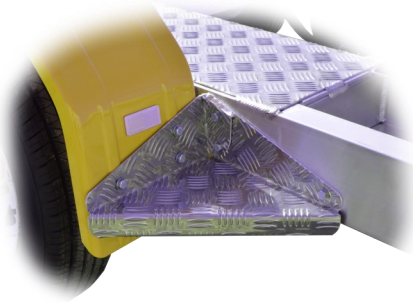
www.sureweld.com.au

Rollmaxx

Features

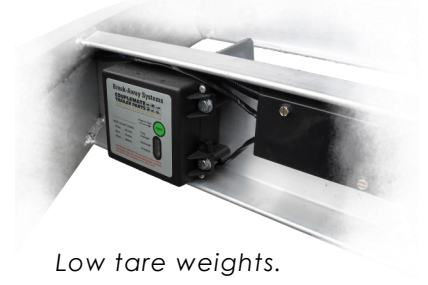


Unique, shockproof HDPE blade and bucket rests.



Zinc-plated, then powder-coated mudguards in a choice of colours.

Electronic breakaway system on all electric braked models.

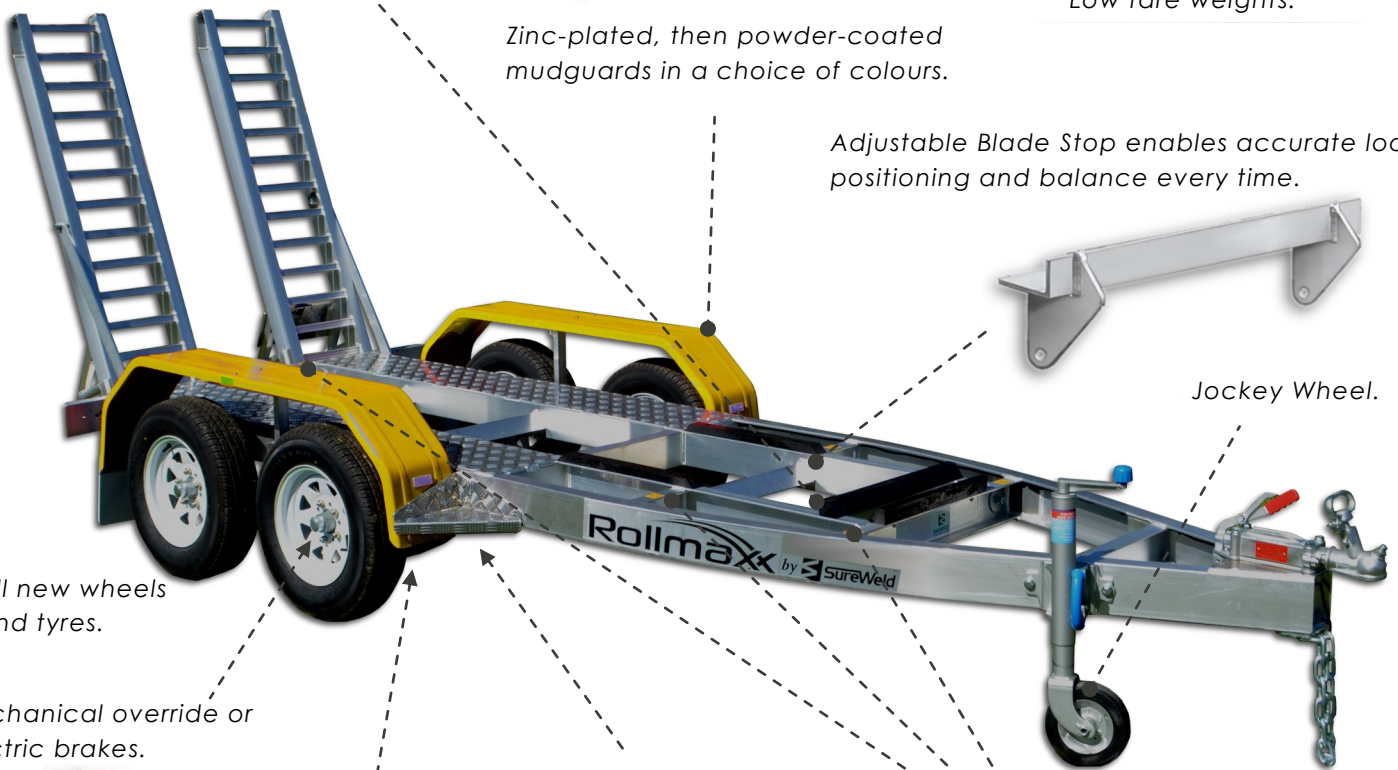


Low tare weights.

Adjustable Blade Stop enables accurate load positioning and balance every time.



Jockey Wheel.



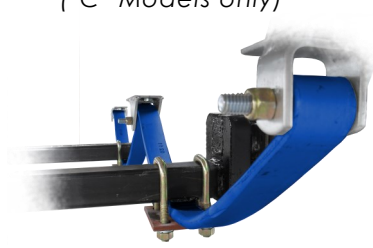
All new wheels and tyres.

Mechanical override or Electric brakes.

Parabolic Suspension. ('C' Models only)

Independent Rubber (torsion-bar) Suspension. (Exc. 'C' Models)

Multiple tie-down points.



1800 787 005



Excavator Series



Loader Series

Aluminium deck surface.

Steel brace-retainer pins.

Hinged Aluminium Ramps.

Multi-volt LED lighting.

Sureweld Trailers demonstrate exceptional levels of refinement in structure and presentation.

Chassis, suspension and drawbar designs are passed through stringent FEA modelling and testing in addition to physical field trials.

Fine details such as working parts, wear areas and surface finishes are completed to the highest standard.

All this is coupled with the fundamental objective of achieving optimum weight saving for economical operation.

Short lead times allow operators to set up their outfit promptly and be on the road and working in the shortest possible time.

Sureweld Plant Trailers are available through a national network of dealers and fully comply with Australian Design Regulations.

Please see overleaf for more information and specifications.

E.W.P Trailers

Mesh-covered ramps for smooth loading.

Beaver-tail for low clearance applications.

Wheel-stop for positive restraint.

Roller Upgrade

Heavy Duty Rubber on Deck & Ramps for increased traction.

Narrow Ramp end taper for smooth approach.

Upgrade available on entire Rollmaxx trailer range.



'OPTIONAL ACCESSORIES'

PRODUCT NAME	PRODUCT CODE	PRODUCT DESCRIPTION
Brake Controller, Electric - Manual. (Legal in QLD only)	EBM2435	Trailer-mounted, manually-adjusted Electric Brake Controller. (No wiring necessary on Tow Vehicle).
Load Restraint Kit - Detachable.	LRD2435	Web, Ratchet & 8mm Chain Kit - Detachable
Load Restraint Kit - Fixed.	LRF2435	Web, Ratchet & 8mm Chain Kit. Permanent fixing to Trailer using 'Hammerlock' Chain Links.
Ramps - Custom Size.	-	Trailer Loading Ramps can be supplied with custom lengths or widths upon request.
Tow Coupling 70mm (non-standard).	TC70	Coupling to suit 70mm Ball size . (Standard size is 50mm).
Tow Ball 70mm (non-standard).	TB70	70mm Ball to suit 70mm Coupling.
Upgrade to 14" Alloy Wheels.	WTU14	Upgrade from steel wheels to 14" Alloy wheels. Additional charge per Trailer.
Upgrade to 16" Alloy Wheels.	WTU16	Upgrade from steel wheels to 16" Alloy wheels. Additional charge per Trailer.
Wheel & Tyre, Spare, 14" Alloy (supply only)	WTA14	Alloy wheel, 5-stud, "Ford" pattern.
Wheel & Tyre, Spare, 14" Steel (supply only)	WTS14	White "Sunraysia" wheel, 5-stud, "Ford" pattern.
Wheel & Tyre, Spare, 16" Alloy (supply only)	WTA16	Alloy wheel, 6-stud, "Landcruiser" pattern.
Wheel & Tyre, Spare, 16" Steel (supply only)	WTS16	White "Sunraysia" wheel, 6-stud, "Landcruiser" pattern.
Spare Wheel Mount.	WM1416	Additional to Spare Wheel if required.
Attachment Storage Pan - Full Length	CKRPP	Aluminium Pan for storing attachments and accessories.
Auger Mounts	AM2435	Mounts for storing augers.

NOTE: All Sureweld accessories including Wheels & Tyres are supplied brand new.

SPECIFICATIONS

The following features are offered with this range of Plant Trailers:

- Independent Suspension
- Choice of Mudguard colours.
- Multi volt LED Lights. All Plug types available.
- High-grade structural aluminium.
- Hinged Aluminium Ramps.
- All new Wheels & Tyres. 8 ply light Truck Tyres.

SW2000C, SW2000 & SW2000W

Nominal dimensions in mm. Match with letters on the diagram below.

- Also included:
- Front axle Disc Brakes.
 - 14"/13"[#] steel Wheels. "Sunraysia" white.
 - Mechanical-override Brakes.
 - 50mm Coupling.
 - Ford stud pattern.

Model	Series	A	B	C	D	E	F	G	H	I	TARE	A.T.M	PAYLOAD
SW2000C [#]	Excavator	1900	1140	4700	470	280	1100	1130	1600	300	300Kg	2200 Kg	1900kg
SW2000	Excavator	1900	1140	4700	470	300	1310	1350	1820	405	340 Kg	2200 Kg	1860 Kg
SW2000W	Loader	1900	1140	4700	470	375	1600	1640	2110	550	360 Kg	2200 Kg	1840 Kg

SW2400EC, SW2400E & SW2400EW

Nominal dimensions in mm. Match with letters on the diagram below.

- Also included:
- Electronic Break-away unit.
 - 14" steel Wheels. "Sunraysia" white.
 - 10" Electric Drum Brakes - All Wheels.
 - 50mm Coupling.
 - Ford stud pattern.

Model	Series	A	B	C	D	E	F	G	H	I	TARE	A.T.M	PAYLOAD
SW2400EC	Excavator	1900	1140	4700	470	280	1100	1130	1600	300	360 Kg	2400 Kg	2040kg
SW2400E	Excavator	1900	1140	4700	470	300	1310	1350	1820	405	380 Kg	2400 Kg	2020 Kg
SW2400EW	Loader	1900	1140	4700	470	375	1600	1640	2110	550	400 Kg	2400 Kg	2000 Kg

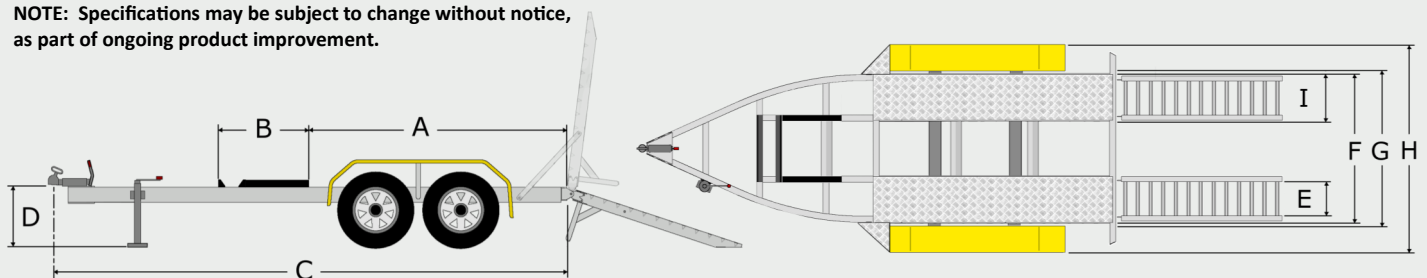
SW3500E & SW4100E

Nominal dimensions in mm. Match with letters on the diagram below.

- Also included:
- Electronic Break-away unit.
 - 16" steel Wheels. "Sunraysia" white.
 - 12" Electric Drum Brakes - All Wheels.
 - 50mm/70mm* Coupling .
 - Landcruiser 6 stud pattern.

Model	Series	A	B	C	D	E	F	G	H	I	TARE	A.T.M	PAYLOAD
SW3500E	Multi-use	2600	900	4800	580	400	1800	1870	2400	650	620 Kg	3500 Kg	2880 Kg
SW4100E*	Multi-use	2600	900	4800	580	400	1800	1870	2400	650	620 Kg	4100 Kg	3450 Kg

NOTE: Specifications may be subject to change without notice, as part of ongoing product improvement.



A = Deck Length. B = Bucket Rest Length. C = Trailer Length. D = Tow Hitch Height. E = Ramp Width [internal].
F = Deck Width. G = Clearance Between Guards. H = Trailer Width [external]. I = Deck Section width.